

Building for the Future: Inside Newpark's Expanded Mud Plant in Constanta, Romania

An Interview with Project Manager, Costin Dincă

NEWPARK

A Project That Defines a Career

When Newpark was awarded the Neptun Deep tender in late 2023, it became clear that supporting this landmark offshore development in the Black Sea would require more than business as usual. It called for expanded infrastructure, new capabilities, and bold leadership.

At the center of this effort is Newpark's upgraded Liquid Mud Plant (LMP) in Constanta, Midia, Romania—now one of the largest and most advanced facilities of its kind in the region.

We spoke with Costin Dincă, Project Manager for Neptun Deep and the Midia LMP, about his journey with Newpark and the challenges and opportunities this project brings.

From Field Engineer to Project Manager

With his Newpark career spanning over 12 years, Costin got his start in field operations before moving into the coordinator position in 2016.

After supporting major clients across Romania, Hungary, and the UK, Costin stepped into his biggest challenge yet: overseeing the expansion of Newpark's Midia Mud Plant to meet the demands of Neptun Deep.

"I'm proud to be one of the youngest project managers in Newpark. The company invested in my development through training and leadership programs, and my managers trusted me with challenging projects early on. That made all the difference. "

-Costin Dincă



Why Constanta, Midia?

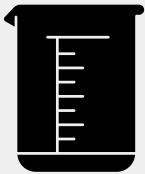
Constanta has long been a strategic hub for offshore operations in the Black Sea. Newpark previously maintained two mud plants in the area, but the Neptun Deep project required a modernized facility.

“It positions us to support not only OMV Petrom’s offshore campaigns, but also future opportunities in the region.”

Capacity & Capabilities



The expanded facility is impressive at scale:



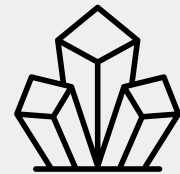
4,250 m³

Total fluid capacity



2,300 m²

Warehouse space



144 m³

Storage capacity for barite



Dedicated base oil storage
for large-scale mixing



Ability to mix 4 different
fluid systems simultaneously

We can mix over 320 m³ of 1.90-2.00 SG fluid in less than 24 hours. That kind of responsiveness is critical for offshore drilling timelines.

Supporting Neptun Deep Through HSE Compliance

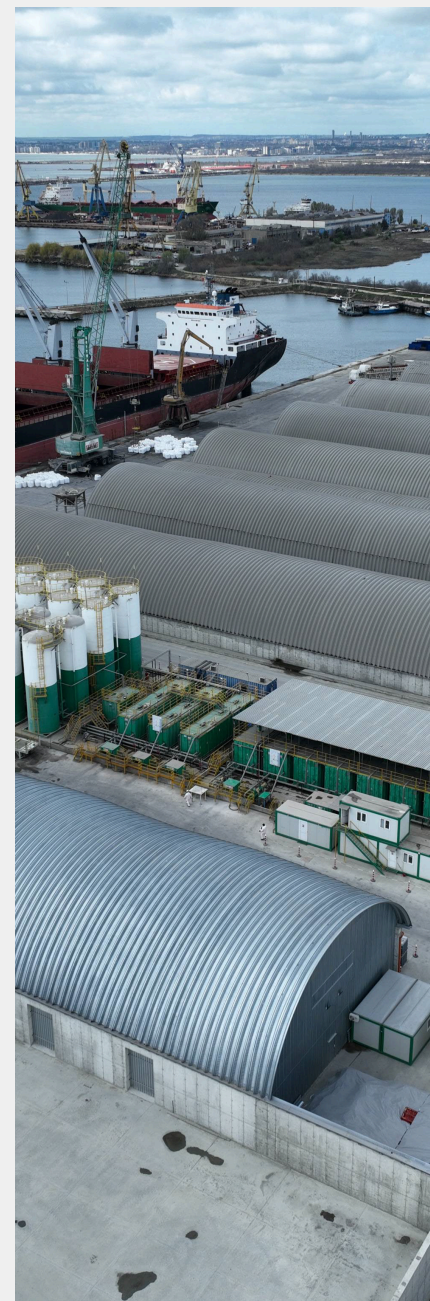
Health, Safety, and Environmental considerations were embedded into the design, construction, and operation of the Midia LMP from the very beginning. Engineered to fully support Neptun Deep offshore operations while also minimizing personnel exposure, environmental impact, and operational risk, the plant's layout, logistics flows, and storage systems were designed to ensure safe handling of large fluid volumes and chemicals.

Today, the Midia facility is supplying drilling fluids for OMV Petrom's Neptun Deep development, Romania's first deepwater gas project. And in just nine months, the LMP has been able to handle a total of almost 30,000m³ of fluid and 20,000t of chemicals—with no major incidents, LTI, or delays to offshore operations. This performance reflects effective risk assessment, competent staffing, 24/7 operational coverage, and strict adherence to established HSE procedures.

Fluids programs currently being utilized include:

- Spike WBM, PAD, and generic WBM systems (KCl-Polymer, NaCl-Polymer) for top-hole drilling
- Oil-based mud (NADF) for intermediate sections
- Reservoir drilling fluid (RDF) for production zones
- Specialized completion fluids, including calcium chloride/bromide blends
- Newpark's **Orca Breakers**

Newpark's proprietary digital solutions **Fluid Architect**, **ClearTrack**, and **ClearDepth** are also being employed for reporting and displacement operations.



Overall, the Midia LMP stands as a benchmark facility where engineering design, operational discipline, and environmental stewardship are fully aligned, contributing to the safe and sustainable execution of the Neptun Deep project.

Leadership Perspective

"This project is of particular importance to Newpark as it allows us to showcase our experience and expertise in working to provide solutions to technical challenges deepwater environment and also deepening our commitment to an important region in the future of oil and gas." says David Paterson, CEO of Newpark.

Looking Ahead

While Neptun Deep is the immediate focus, the Midia LMP positions Newpark for future growth in the Black Sea.

A Personal Milestone

For Costin, the project is more than just a professional achievement: It's a testament to Newpark's global capabilities and the many opportunities, both personal and professional, that arose as a result.



This has been the biggest challenge of my life so far, and I'm proud to have been a part of it. The success of this project is based on great teamwork, the help from Newpark's Eastern European team, and the full support of the Global Technology Team. That makes me feel confident about the future.